

STAMP



Volume 47 - Issue No. 3 w305

July, Aug, Sept, 2016

SEQUOIA STAMP CLUB

APS #687-54588

Club meetings are held every **second and fourth Tuesday** of each month at the Community Activities Bldg., 1400 Roosevelt Ave. Redwood City, at 7:05 pm.

Refreshments are served and visitors are always welcome.

More info at:

www.penpex.org/ssc

President's Message:

We have had an exciting few months at the Sequoia Stamp Club.

In June, our very own Kristin Patterson was elected to a position as Trustee of the American Philatelic Research Library with 70% of the vote.

Our annual summer picnic successfully competed with the New York Stamp Show, a Golden State Warriors playoff game, and the California state primary elections. We had about 20 attendees and a great potluck fare, including Asian red bean pudding and German cake.

We can claim two new members who have the national philatelic spotlight:

1) Scott English, Executive Director of the American Philatelic Society became a member through the new policy adopted by the Sequoia Governing Board to grant honorary membership to whomever currently holds the position.

2) Jessica Rodriguex, a young woman who has been selected by the APS as a Young Philatelic Leader Fellow specializing in exhibiting, was voted in as a new member on June 14. We will be interested to see how her year transpires.

Our meetings have been strong and our presentations solid. We have enjoyed learning about EFO's, Selling on EBay, and the New York International Stamp Show. A recent auction of donated items has added to our financial well-being.

I hope all, like me, are anxious to see what else the future hold for us.

Craig Butterworth, President, Sequoia Stamp Club



In This Issue

President's Message	1
Stamp Calendar	1
Membership News	2
Club Activities	3
PENPEX Caboose	4
World Stamp Show	5
Max Lichenheim (2)	6
Wm Shakespeare	7
China Clipper	8
China Clipper (cont')	9
Phil A. Tellick	10

2016 Sequoia Club Programs & Stamp Calendar Schedule

July 9-10: Sacramento Stamp Fair. Scottish Rite Center.

July 12 – A Philatelic Visit to Tannu Tuva by Victor Ivashin. Silent Auction

July 23-4: Reno Stamp & Cover Show. National Bowling Stadium, Reno, NV.

July 26 – U.S. Airmail Spec Delivery Issues by Jim Giacomazzi. Silent Auction

July 30: Western Philatelic Library Auction. 3004 Spring St., RWC - 1:00pm

Aug. 4-7: APS StampShow. Oregon Convention Center, Portland, OR.

Aug. 9 – Early Great Britain by David Abrahams. Silent Auction

Aug. 23 – Executive Board Meeting (6:15) Open to the public.

Christiansen Live Auction

Aug. 26-28: Santa Clara Stamp, Collectibles & Coin Show.

Sep. 3-4: 3-Dealer Show. Biltmore Hotel, Santa Clara.

Sep. 13 – APS Video: Mexico 1914, The Denver Eagles. Silent Auction

Sep. 27 – Swap Meet

Closed Albums

It is with great sadness that I tell that my dear husband, Charles, passed away unexpectedly on Wednesday, June 1 peacefully here at home. His good heart just said "enough" and he was gone. Please tell all the members of Sequoia Stamp Club that they were an important part of his life these last two or three years. He always looked forward to the meetings and loved preparing what he was going to put on display for the auctions and took great pleasure in finding the stamps that he thought a certain person would enjoy having. You all enriched his final years tremendously - even musical entertainments like *Les Miserables* and *Man of La Mancha* - and the Chinese dinner we enjoyed together after the show.



A memorial service will be held on Saturday, July 23 at 11am at the Unitarian Universalist Church of San Mateo, 300 East Santa Inez Avenue, San Mateo 94401, with a reception to follow in the church hall.

Thank you again for your friendship with Charles. He loved you all.
Best Regards, Anne Dymond, Charles' wife.

Miriam Thurston and Ed Bierman Approved for Life Membership



ing and the Sequoia Stamp Club. Miriam's collecting interest is Worldwide topicals, especially religion on stamps, and U.S. Miriam is a regular exhibitor at PENPEX, and recently won an award for her exhibit on Abraham Lincoln.

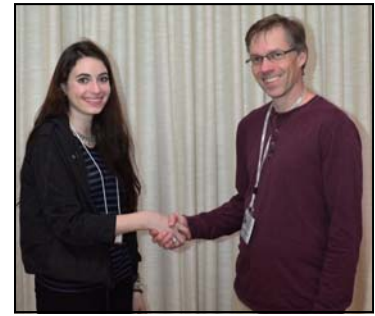
Ed Bierman joined the Sequoia Stamp Club in 2000. Ed is an avid underwater scuba diver and photographer, so it is natural for him to collect Marshall Islands and Fish topicals. He also collects private mailing cards and postcards, especially items of local interest. He recently won Grand Award at the COALPEX Show for his exhibit on San Francisco's Cliff House. He is also a regular contributor of articles to the Chatter and gave a very interesting presentation at a recent Sequoia Club meeting on Redwood City postcards. Ed's contribution each year to PENPEX is to put together an excellent 16 page program listing all the events and details of the show. Ed is the current Webmaster for the Sequoia Club, PENPEX, and the Council of No. California Philatelic Societies. Congratulations to both Miriam and Ed for their lifetime membership awards.



Newsletter Staff: Editor: Jim Giacomazzi, President's Message: Craig Butterworth, Feature Articles: Marsha Brandsdorfer, Graphics: Miriam Thurston, Caboose: Kristin Patterson, Youth: Preston Chiappa, Photographer: Ken Perkins, Printing: John Corwin, and Webmaster: Ed Bierman.
The *Stamp Chatter* is published quarterly by the Sequoia Stamp Club. Visit our website at: www.penpex.org/SSC or email us at sequoiastampclub@yahoo.com.

Newest Member is APS Young Philatelic Leadership Fellow

At the June 14th meeting, Jessica Rodriguex was unanimously voted in as a new member of our club. She is also a member of the San Jose Stamp Club and editor of their newsletter. Jessica was recently selected for the APS' Young Philatelic Leaders Fellowship program, Class of 2017. The program's goal is to create philatelic leaders of tomorrow by connecting them with the leaders of the philatelic world today. Stamp collectors between the ages of 16 and 24 are eligible. Jessica along with 3 other Fellows will travel to two APS StampShows, AmeriStamp Expo, American Philatelic Center, and the Smithsonian National Postal Museum with her expenses covered by the program. She will be given the opportunity to meet philatelic leaders along with other collectors of her age. She selected the exhibitor track and will develop an exhibit as part of her experience. When you see Jessica, welcome her to the club and congratulate her on her achievement.



Jessica Rodriguex with Sequoia President Craig Butterworth.

Members Enjoy Concert and Dinner



Jim, Wally, Craig, and Chris pose with our "star" performer Malcolm.

Five members of the club and their spouses spent an enjoyable Sunday afternoon at Carlmont HS in Belmont watching the Masterworks Chorale performance of *Man of La Mancha*, the triumphant musical based on Cervantes' celebrated work, Don Quixote. The semi-staged production was enhanced by music of imperial Spain, as well as flamenco guitar and dance. The voice of the star performer in the role of Don Quixote was mesmerizing, and the words to "The Impossible Dream" sent chills up spines of everyone in the audience. But the highlight of the show for us was seeing our own Malcolm Catchatoorian in the role the "barber". (See photo at left). Malcolm was outstanding in his performance, and made us all very proud. Following the concert, the group reconvened at the Gin Mon



Dinner at Gin Mon following the concert.

restaurant for a delightful dinner. Tickets to the concert had been won in a raffle at the end of the year Holiday Party.

Plenty of Food at Summer Picnic

Due to a smaller turnout than usual, there was plenty of barbecued ribs, chicken, and brisket to go around this year. Attendees enjoyed meat and beans from Armadillo Willy's, plus the usual delicious assortment of salads and desserts brought by members to share. It was a beautiful day, but primary voting, a Warrior's basketball playoff game, and the excursions to the World Stamp Show in New York reduced attendance to about 20 lucky members who very much enjoyed the food and camaraderie of the event. Thanks to Severin Morger and Ed and Sue Rodriguez for arranging the main course, and to Jennifer Thompson for helping to set up even though she and Chris could not attend!



Liam drove his own car.



Plenty of cold drinks needed on a warm, sunny day.



Sunglasses also needed.



Or at least a good hat, right Steve?

PENPEX CABOOSE

The PENPEX 2016 stamp show is only five months away. The show held December 3 and 4, gives us the opportunity to be involved in a great local show held in the Redwood City Community Activities Building. The show is run entirely by volunteers who spend much of their time and effort preparing for the show as well as the full show weekend. PENPEX is always looking for dedicated workers, even if it is for just a few hours during the show. I want to thank David Abrahams for taking over the Welcome Area and Raffle which has been run smoothly for the past 3 years by Jim Sauer. A big thanks to Jim!!!

The chart at the right lists all the PENPEX committees and respective leaders. If you are interested in joining our team, please contact Kristin Patterson by phone at (408) 267-6643 or email at penpexredwoodcity@yahoo.com to see how you can help out before the show or on Friday Dec. 2, Saturday Dec. 3, and/or Sunday Dec. 4, 2016.

As a 501c3 non-profit organization, donations to PENPEX are tax deductible to the full extent of the law. PENPEX recently accepted a donation of nine lovely, handmade albums containing single, mint blocks, and FDC of U.S. postage stamps from the 1930s to 1970s. The collector had passed away in the late 70s and now his son wanted his fathers collections to be an inspiration to other collectors. All the material is being passed on to Sequoia Stamp Club which has many active U.S. collectors.

Visit our website, www.penpex.org, to learn about the free stamp show. We look forward to seeing you. Bring a friend.

PENPEX BOARD	MEMBER
Chairperson	Kristin Patterson
Vice-Chair	Craig Butterworth
Treasurer	Eduardo Martino
Secretary	Jim Giacomazzi
Director	Kjell Enander
Director	Jim Mosso
Director	Ed Rodriguez
Director	Stephen Sexton

Committee(s)	Leaders
Dealers / Facility	Kristin Patterson
Setup and Takedown	Eduardo Martino
Program/ Graphics/ Website	Ed Bierman
Welcome/ Registration Area	David Abrahams
Exhibits / Judges	Vesma Grinfelds
Awards Banquet	Stephen Sexton
Silent Auction	Jim Mosso
Cachet / Cancels	Miriam Thurston
Public Relations / Publicity	Jim Giacomazzi
Snack Bar / Foods	Kjell Enander
Photographs	Ken Perkins
Seminars / Meetings	Ed Rodriguez
Youth Area	Preston Chiappa
Security / Table Rental	Craig Butterworth

SAVE the Date
Dec. 3 & 4, 2016
for PENPEX.

Sequoia Members Attend World Stamp Show-New York 2016

The program for the June 14th meeting was a presentation from the members of the Sequoia Club who were able to attend the World Stamp Show in New York City. Chris Palermo led the discussion and showed photos taken by the members. It was interesting to hear Ed Rosen's perspective as a dealer at the show as well as reports from Chris, John Corwin, Kristin Patterson, and Jay Strauss. John mentioned that he also made a side trip to Washington, DC, where he visited the National Postal Museum and afterwards to Bellfonte, PA to see the American Philatelic Center. Attending the show but unable to attend Tuesday night's SSC meeting were Greg Cykman and Peter Leffler. Below are some of the photos depicting what our East Coast travelers experienced at the show.



Entrance to World Stamp Show - NY 2016



Sample of Exhibits - Sheet of Penny Blacks



Original Curtiss Jenny Biplane on Display



A Star of the Show - C3a



John Lennon's Childhood Stamp Collection



Dressed in 1930s, Kristin and friends on way to the Tiffany Dinner.

A Stamp Collection Saved Their Lives in Nazi Germany

Part Two of Two:

For five years in Nazi Germany, Max and Margaret Lichenheim feared for their lives. Prohibited from practicing law in April 1933 and imprisoned after the 1938 anti-Jewish pogroms known as Kristallnacht raged throughout the country, Max knew it was only a matter of time.

When his aunt procured his release by providing proof of passage on a ship out of Germany - according to the U.S. Holocaust Memorial Museum, Nazi policy still "encouraged Jewish emigration" then Max sold parts of his valuable foreign stamp collection and bought Margaret a companion ticket to the open port city of Shanghai.

Carrying passports stamped with "J" for Jew, the Lichenheims visited Max's beloved aunt in Berlin on April 18, 1939. They then traveled to Munich to board the train to Genoa, Italy. "Munich was Hitler's headquarters and the real center of activity, so we were very much afraid and careful," Margaret recalled in family papers. "When we arrived in Genoa, we were free human beings. No one knew our history. [I remember] eating ice cream."

On April 20, the Lichenheims joined some 700 other Jewish refugees and sailed to Shanghai on the luxurious SS *Guilio Cesare*. A 25-day journey, the couple often lounged on deck chairs. They saw Mount Vesuvius "smoking," Mount Etna looming in the background, and the Suez Canal so narrow, Margaret recollected, "you could almost put your hands out and touch the banks."

Landing in Shanghai, they were shocked by the sights, sounds, and smells of one of the world's largest harbors — populated by three million people — and disoriented by the "foreign" language; the cacophony of traffic, cars, rickshaws, and motorbikes; the overpowering scent of human sweat, garbage, gasoline, opium drafts; and the prevailing association with crime and prostitution.

"We were put on trucks and taken to a Heime [home], a primitive building with hundreds of bunk beds, no washing facilities, no privacy," Margaret said. "Max slept upstairs. I slept downstairs."

Shanghai was home to a small affluent Jewish community that immigrated in early 1862. By the late 1930s, the Chinese city was host to more than 22,000 Jewish refugees. Arriving nearly penniless, they relied on Jewish organizations, such as the Committee for the Assistance of European Jewish Refugees funded by the Joint Distribution Committee (JDC) in New York, for food, housing and healthcare. It was a challenging undertaking. JDC appropriations escalated from \$5,000 in 1938 to \$100,000 by 1939.

After registering with the International Committee, Max sold more of his valued stamp collection. The couple rented a single room. "We had bed bugs, but we had privacy," Margaret recounted. She also had a letter of recommendation and found office work in a German-owned firm.

"The business was in the International section of town," she said. "The weather was hot, humid and quite a walk. I had to wear nice clothes for work and so re-dressed when I got downtown."

Sent to the firm's office in Manchuria, the couple returned to Shanghai under Japanese occupation. Max sold cigars, taught German, and practiced law. Later the couple worked for the U.S. Air Force. In 1948, they left for San Francisco and finally settled in Utah. Enamored with Utah landscapes, the Lichenheims hiked mountain trails. They toured national parks. Receiving compensation from Germany, they imbibed cultures and became fearless world travelers.

Until his death in 1982, Max's stamp business thrived in the Felt Building in downtown Salt Lake City. He was esteemed by the country's top stamp collectors, and at the same time, had an impact on Utah young people.

"I was a 10-year-old kid, mowing lawns in Sugar House and earning \$5 a week," says Midvale resident Jerry Clark. "For 5 cents, I'd hop on the bus, visit Max's office, and talk stamps."

Max quickly became Clark's mentor. "He taught me not only about a stamp's catalogue value, but its history and origin, its composition and quirks," Clark said. "No wonder I got hooked on stamps."

(The original article written by Eileen Hallet Stone appeared in the *Salt Lake City Tribune* on Oct. 11, 2015.)

William Shakespeare

by Marsha Brandsdorfer

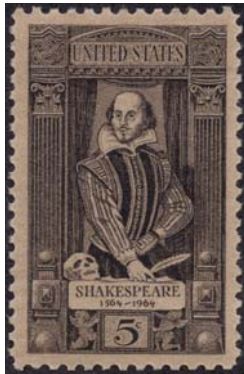


There are bounteous colorful international stamps on William Shakespeare and his many plays, which could make for a wonderful topical to collect. Much of what is known about Shakespeare's life is through the research of scholars, who have studied the huge presence of poems and plays that Shakespeare left behind.

Stephen Greenblatt's biography, Will in the World: How Shakespeare Became Shakespeare explains that Shakespeare, born on April 23, 1564, had his early influences in theater by reading and performing ancient plays in their original Latin language when he was a young child in his single roomed Stratford school, where learning Latin was mandatory. Additionally, he would see perform-

ances when acting troops came to town. As religion played a strong role in the British society in the sixteenth century, religion was essential to the themes of the plays.

Shakespeare was 18 when he married Anne Hathaway, who was 26 in November 1582. Since women were not allowed an education, it is possible Anne was illiterate and thus never read any of her husband's writings. They had three children: Susanna, and twins, Hamnet and Judith. However, in the mid-1580s, Shakespeare left his family in Stratford and went to London, as the city attracted newcomers, and had opportunities for jobs and businesses.



In London, Shakespeare saw, for the first time, a freestanding theater. Admission would be charged at the entrance. The more pennies collected from a patron, the better the seat that would be provided to that audience member. To keep afloat financially, and to encourage patrons to return, theaters had to continuously deliver performances of new plays. This provided a grand opportunity for writers. Shakespeare met playwrights who were writing for the London stage. The circle of writers was very influential and inspirational to Shakespeare, who also would contribute to the London theater. Here, religion was mocked. Adultery, betrayal, swearing, and murder were performed on the stage. This gave the playwrights more creative expression.

It was by the late 1590s, that Shakespeare was most productive writing plays and was growing famous and wealthy, with such plays as Hamlet, influenced by the death of his son, and also of his father, who was quite ill at the time. In the early 1600s, he wrote his play, King Lear. Shakespeare at the time was aware of family tensions and fears of getting old. Life expectancy at the time was to be around the 60s. His play may have been inspired by a 1603 lawsuit, wherein two elderly daughters attempted to get their father declared legally insane so that they could take over his estate. The youngest daughter tries to save her father from these selfish actions of her two older sisters. In starting to think of his retirement, around 1611, Shakespeare moved back to Stratford to be with his family. It is here where he died and was

buried on April 25, 1616. There are no details of illness or what caused his death.



SFO Aviation Museum and the China Clipper

By: Ed Bierman

At the San Francisco International airport there is a very special aviation museum. It is marvelous place to visit and I often volunteer to pick someone up at the airport just so that I can come early to see what is on display. The large museum room has large models hanging from the ceiling as well as permanent displays of aviation history which include old airline uniforms, items from the history of SFO and the globe from the 1935 World's Fair.

Besides the main museum room there are also rotating exhibits in several places throughout the airport. Last year, for example, during the 100th anniversary of the Panama Pacific Expo (PPIE) there was on display of over 30 model Pagodas which were a popular exhibit during the actual fair in 1915. These models had not been together since the fair. Currently, they have a display on the 25th anniversary of the movie Toy Story.

Part of the permanent collection is an exhibit on the **China Clipper (NC14716)** which was the first of three Martin M-130 four-engine flying boats built for Pan American Airways and was used to inaugurate the first commercial transpacific airmail service from San Francisco to Manila in November 1935. Built at a cost of \$417,000 by the Glenn L. Martin Company in Baltimore, Maryland, it was delivered to Pan Am on October 9, 1935. It was one of the largest airplanes of its time.

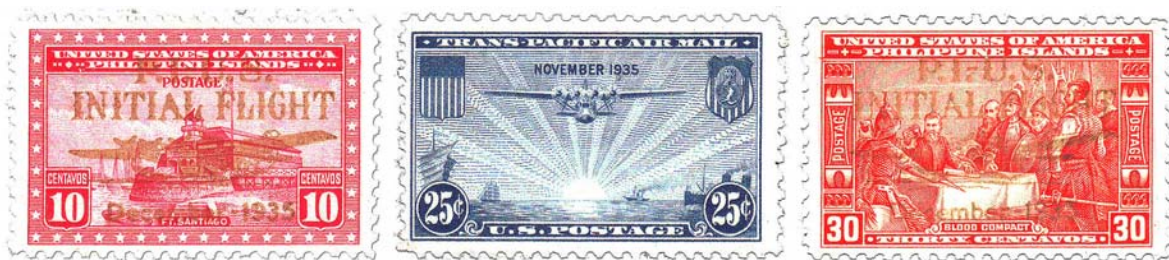
On November 22, 1935, the China Clipper took off from Alameda, California in an attempt to deliver the first airmail cargo across the Pacific Ocean. Although its inaugural flight plan called for the China Clipper to fly over the San Francisco–Oakland Bay Bridge (still under construction at the time), upon take-off the pilot realized the plane would not clear the structure, and was forced to fly narrowly under instead.

On November 29, the airplane reached its destination, Manila, after traveling via Honolulu, Midway Island, Wake Island, and Guam, and delivered over **110,000 pieces of mail**. The inauguration of ocean airmail service and commercial air flight across the Pacific was a significant event for both California and the world. Its departure point is California Historical Landmark #968 and can be found in Naval Air Station Alameda.

The China Clipper remained in Pan Am service until January 8, 1945, when it was destroyed in a crash in Port of Spain, Trinidad and Tobago.

Both the United States and Philippine Islands issued stamps for Air Mail carried on the first flights in each direction of PAA's Transpacific "China Clipper" service between San Francisco, CA, and Manila, PI. (November 22 – December 6, 1935)

China Clipper Air Mail stamps



Red:
San-

"Ft.

tiago" (1935, 10 centavos, Philippines Islands) | Blue: "China Clipper" (1935, 25 cents, US) | Orange: "Blood Compact" (1935, 30 Centavos, Philippines Islands).

Both Philippines Islands stamps are overprinted in gold with "P.I. – U.S. INITIAL FLIGHT December – 1935" and a silhouette of a Martin M-130.

(Cont' on page 9)

(Cont' from Page 8)

As part of the exhibit there are several philatelic items of interest. Here are two images that I took of covers on display there:



First flight airmail cover, San Francisco to Manila, 1935



First flight airmail flight cover, San Francisco to Hong Kong, 1937

Resources:

Wikipedia

en.wikipedia.org/wiki/China_Clipper

SFO Museum

www.flysfo.com/museum/exhibitions/china-clipper - images of items in the exhibit

AP Story about the Safe Arrival of the China Clipper at Wake Island

www.sfmuseum.net/hist8/35clipper.html



PHIL A. TELICK
& SNAIL MAIL '4-EVER'
By Miriam S. Thurston 2016 All Rights Reserved c



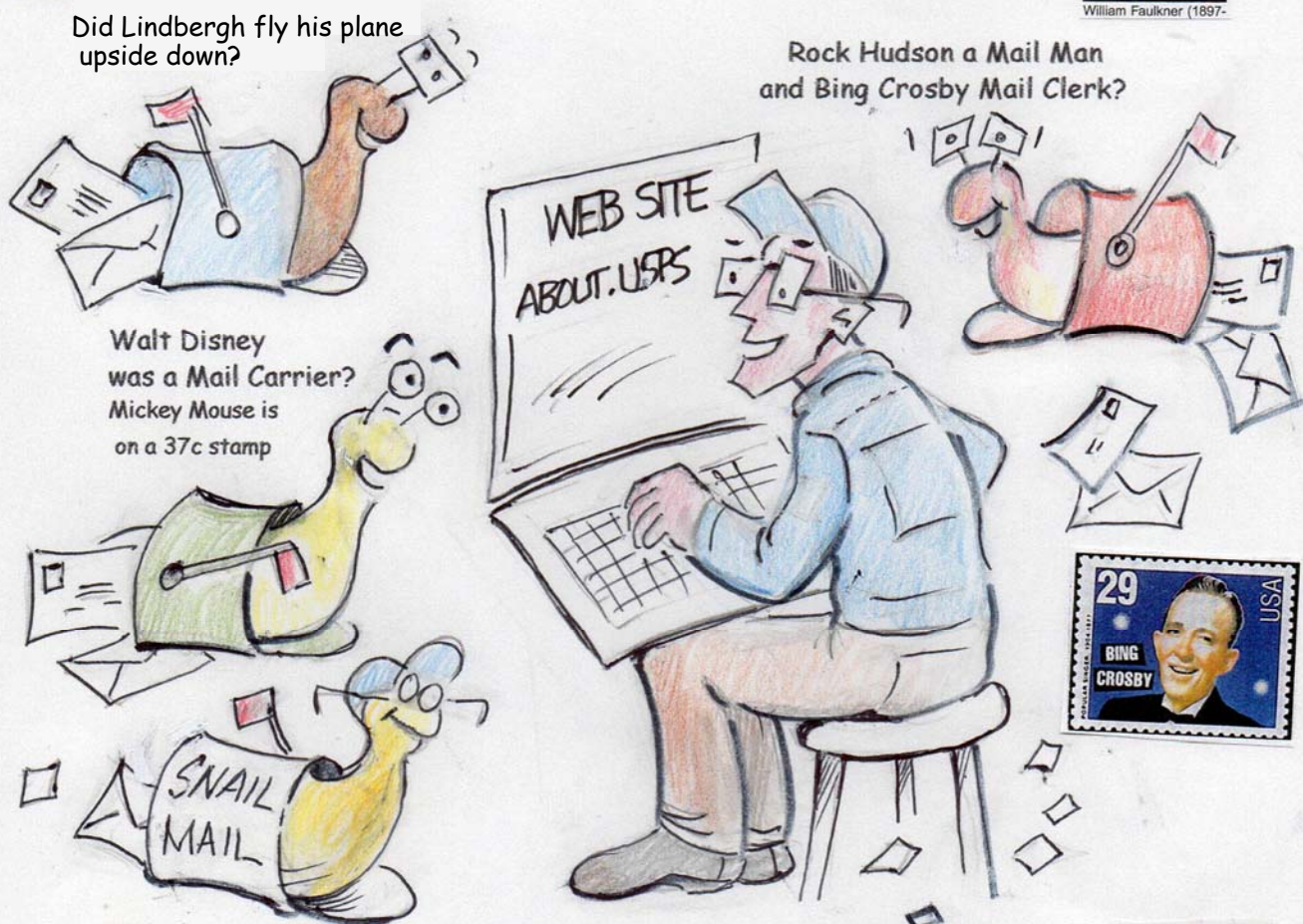
Phil A. Tellick is giving a lesson about the History of USPS to the Snail Mailers...

Did you know the first Postmaster General was Ben Franklin and two U.S. Presidents, Abraham Lincoln and Harry Truman, were local postmasters; Bing Crosby was a mail clerk; Walt Disney and Rock Hudson were mailmen; and Charles Lindbergh was a airmail pilot.



Did Lindbergh fly his plane upside down?

Rock Hudson a Mail Man and Bing Crosby Mail Clerk?



Walt Disney was a Mail Carrier? Mickey Mouse is on a 37c stamp

FYI:

On May 7, 1833, 24-year old Abraham Lincoln was appointed postmaster of New Salem, Illinois, and served until the office was closed in 1836. He received yearly compensation of \$55.70. Besides his pay, Lincoln, as postmaster, could send and receive personal letters free. Mail arrived once a week. If an addressee did not collect the mail, as was the custom, Lincoln delivered it personally, usually carrying the mail in his hat. Even then, Lincoln was "Honest Abe."

http://about.usps.com/publications/pub100/pub100_008.htm

